

**Final horse riding trails
on Forest Reserve estate in SEQ.**

Mapleton region

LEGEND

- Finalised Horse Trails (see note 1)
- - - Indicative Trails on other land (see note 2)
- ⋯ Indicative Trails on Forestry Plantations Queensland Estate (see note 3)

Protected Areas Estate

- National Park
- Conservation Park
- Forest Reserve
- State Forest
- Other Reserves

- Other Land
- Forestry Plantations Queensland Estate
- Highways
- Major Roads

8

NOTES:

1. Access to horse trails are subject to the operational requirements of the Queensland Parks and Wildlife Service.
2. Access to off park linkages are indicative only and, where appropriate, require the permission of the landholder. It is the responsibility of horse riders to determine appropriate access requirements.
3. Access to forest plantation areas are subject to the operational requirements of Forestry Plantations Queensland.

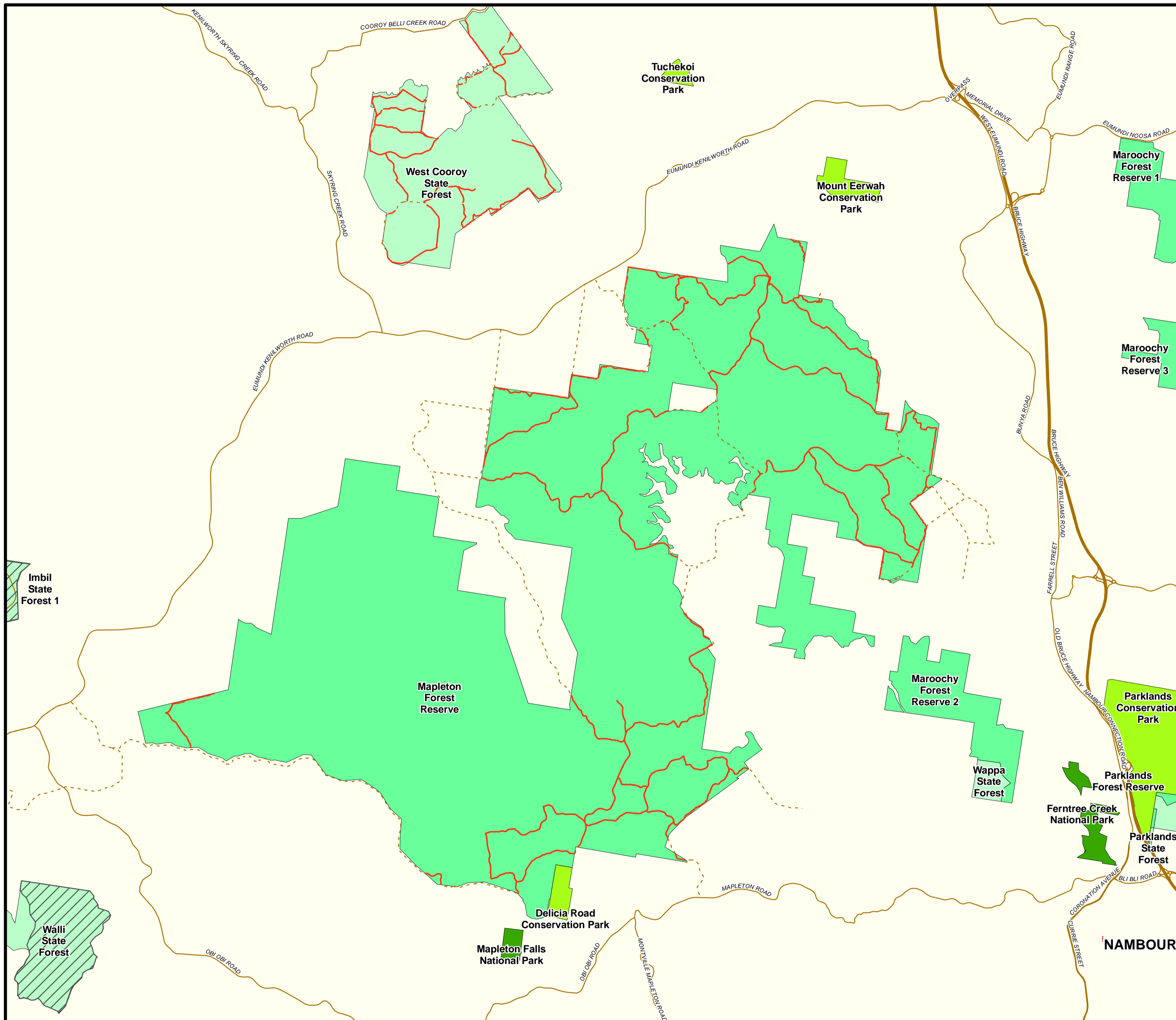


Queensland Government Environmental Protection Agency GDA 1994 MGA Zone 56 Transverse Mercator Projection



Produced on Apr 14, 2008, by the Biodiversity Strategies Unit within the Planning Division of the Environmental Protection Agency, Queensland Government.

Whilst every care is taken to ensure the accuracy of this product, the Environmental Protection Agency makes no representations or warranties about its accuracy, reliability, completeness or suitability for any particular purpose. The Environmental Protection Agency disclaims all responsibility and all liability (including without limitation and liability in negligence) for all expenses, losses, damages (including indirect or consequential damage) and costs which might be incurred as a result of the product being inaccurate or incomplete in any way and for any reason.



Imbil State Forest 1

Walli State Forest

NAMBOUR